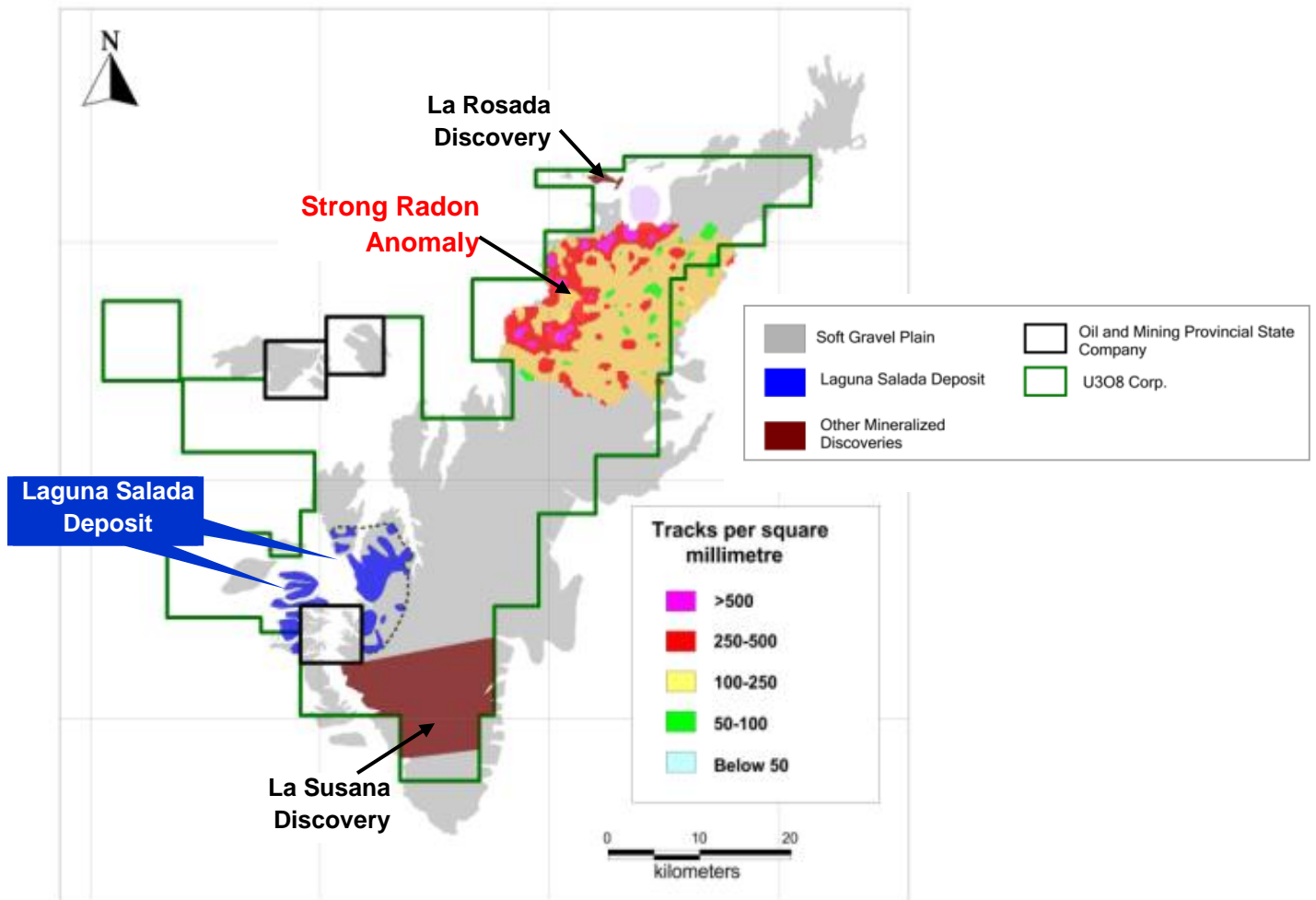


Figure 1 – Location of the New Radon Anomalous Area within the Laguna Salada District



The grey area shows the extent of the gravel plain which contains the Laguna Salada Deposit (footprint shown in blue), relative to gridded Alpha Track radon cup results reported in this press release from a 300km² area located between the Laguna Salada Deposit and the La Rosada discovery. U3O8 Corp's exploration concessions are outlined in green and the three concessions belonging to Chubut's provincial petroleum and mining company, on which we have established an option to form a partnership, are shown in a black outline.