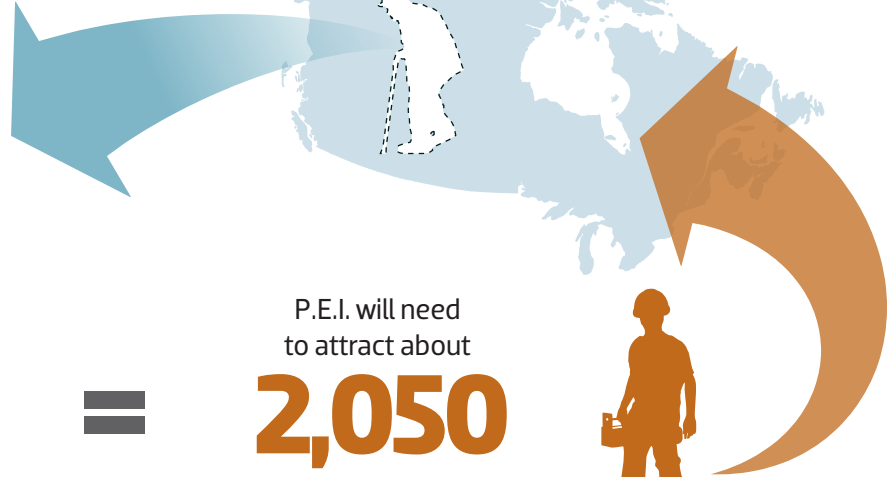


WHAT'S CHANGING IN THE PRINCE EDWARD ISLAND CONSTRUCTION INDUSTRY?

1,550*
construction workers are
expected to retire over the next



At the same time, the province's
labour force grows by

500

workers to meet demands created
by increased construction activity.

=

P.E.I. will need
to attract about

2,050

new construction workers
over the next 10 years.



* 26% of the current labour force

Source: BuildForce Canada (data as of February 2015)