

Figure 3: Additional cross-sections

The image on the left is an east - west cross-section located approximately 350m south of the east - west cross-sections in Figures 1 and 2 and is positioned closer to the southern Pit 8. The east - west cross-section image on the right is located a further 150m south of the image on the left. The final configuration of Pit 6 and Pit 8 are projected onto these two east - west cross-sections looking north.

Also shown is the configuration of the Santa Rita ore body as projected from the southern Pit 8 location onto each of the E-W cross-sections. Light blue indicates total nickel grades greater than 0.25 and less than 0.35, light green indicates total nickel grades greater than 0.35 and less than 0.50 and yellow indicates total nickel grades greater than 0.50.

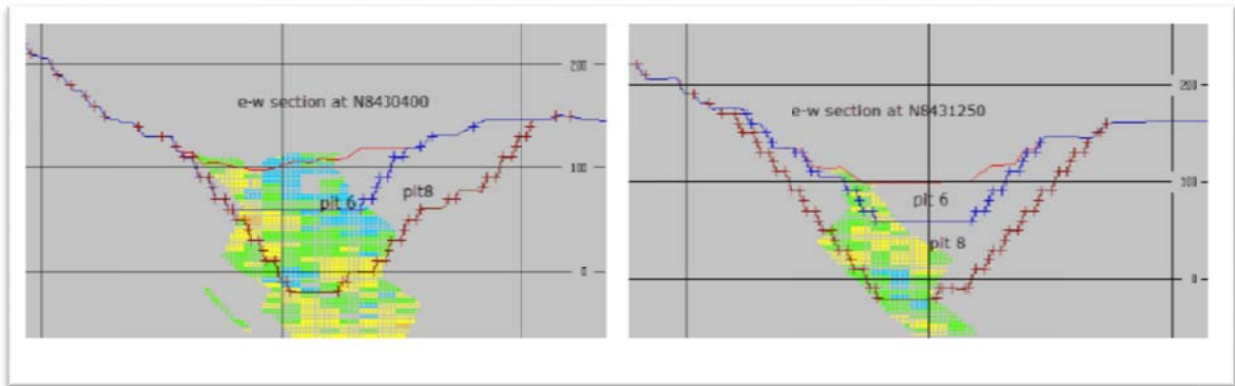


Image produced by Mintec using their proprietary software MineSight.