

Figure 2: Phase 8 design overview and cross-section

The image on the left is a plan view of the entire Santa Rita open pit elevations following completion of mining of Pit 6 and Pit 8. The image on the right is an east - west cross-section (looking North) showing the final planned configuration of Pit 6 and Pit 8 in the central portion of the Santa Rita deposit. Also shown is the configuration of the Santa Rita ore body at the northern Pit 6 location with light blue indicating total nickel grades greater than 0.25 and less than 0.35, light green indicating total nickel grades greater than 0.35 and less than 0.50 and yellow indicating total nickel grades greater than 0.50. Under the 2015 mine plan, Pit 8 will be mined over a period of 3.5 years following completion of Pit 6.

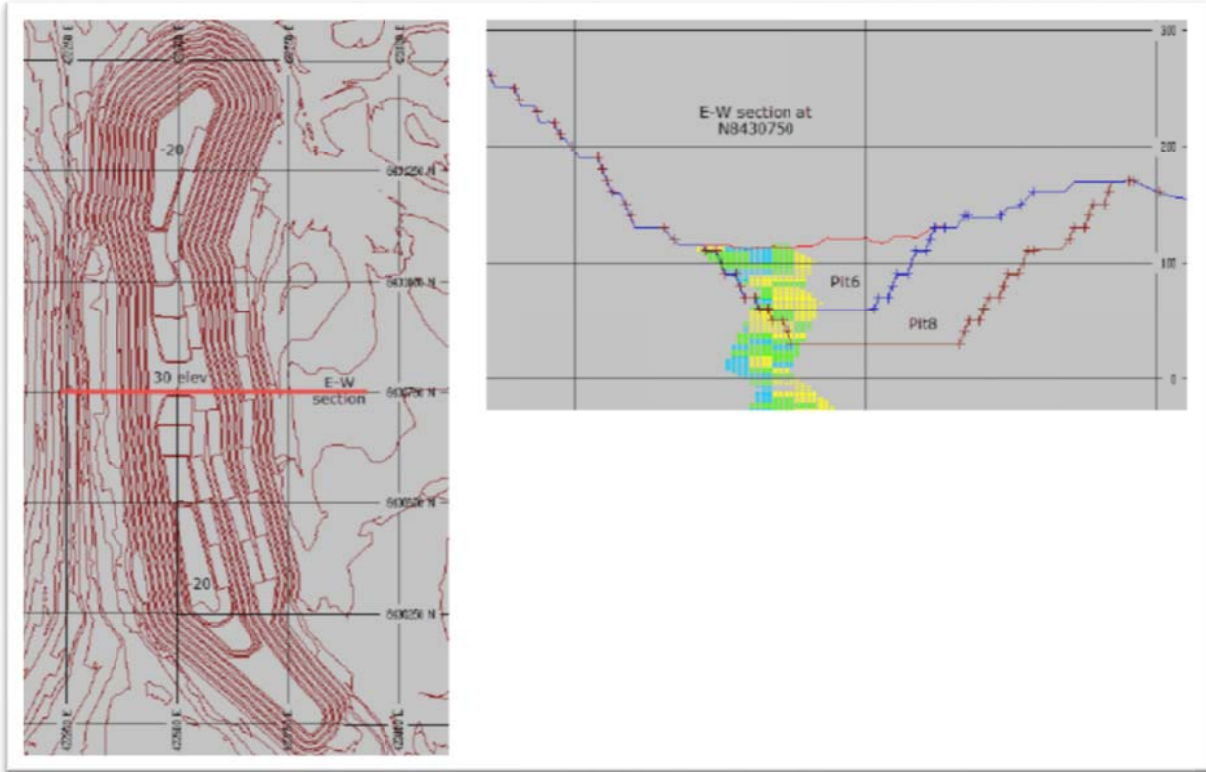


Image produced by Mintec using their proprietary software MineSight.