

Figure 1. Pit 6 design overview and cross-section

The image on the left is a plan view showing the pit designed to be mined from February to July 2015. The image on the right is an east - west cross-section showing the final planned configuration of Pit 6 in the central portion of the Santa Rita deposit. Also shown is the configuration of the Santa Rita ore body with light blue indicating total nickel grades greater than 0.25 and less than 0.35, light green indicating nickel grades greater than 0.35 and less than 0.50 and yellow indicating nickel grades greater than 0.50.

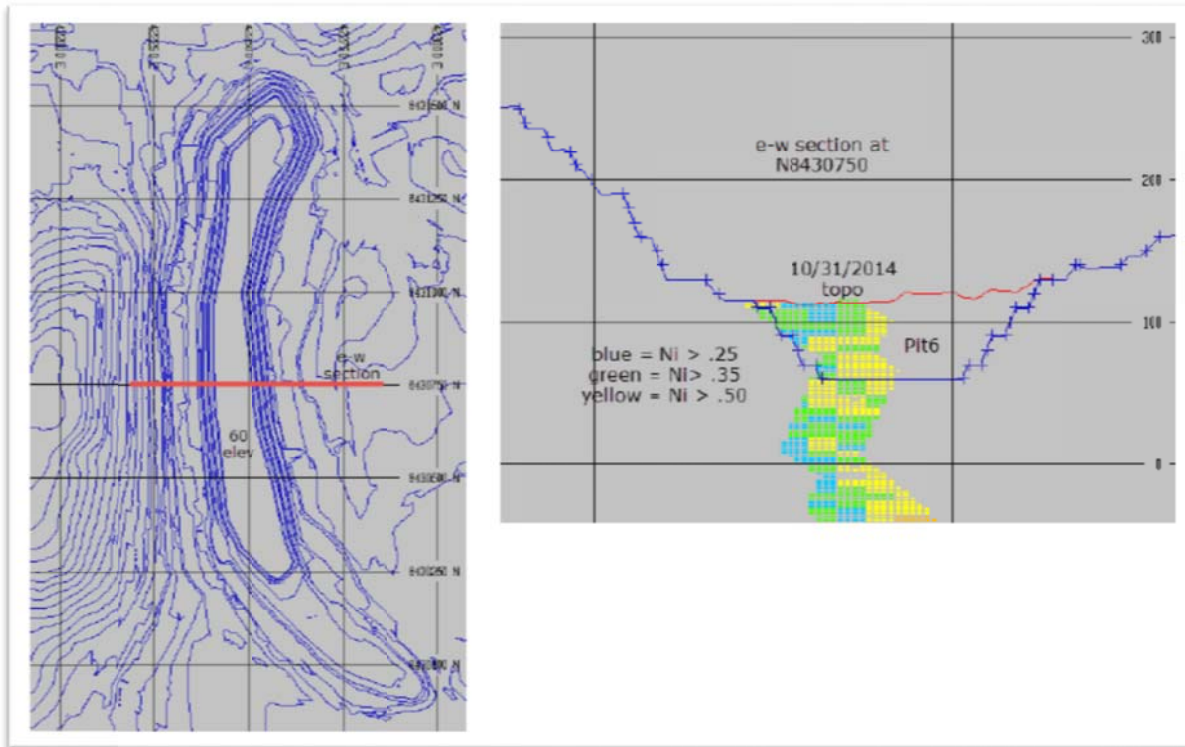


Image produced by Mintec using their proprietary software MineSight.