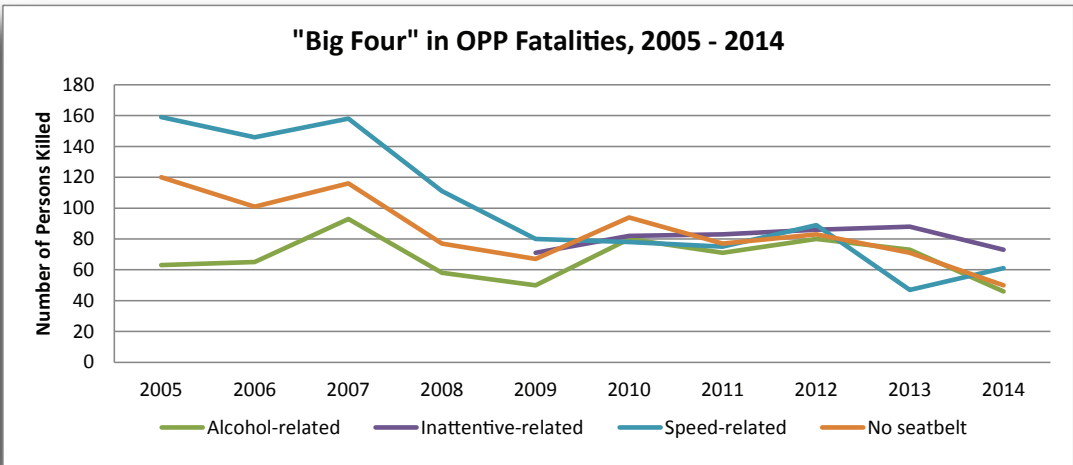
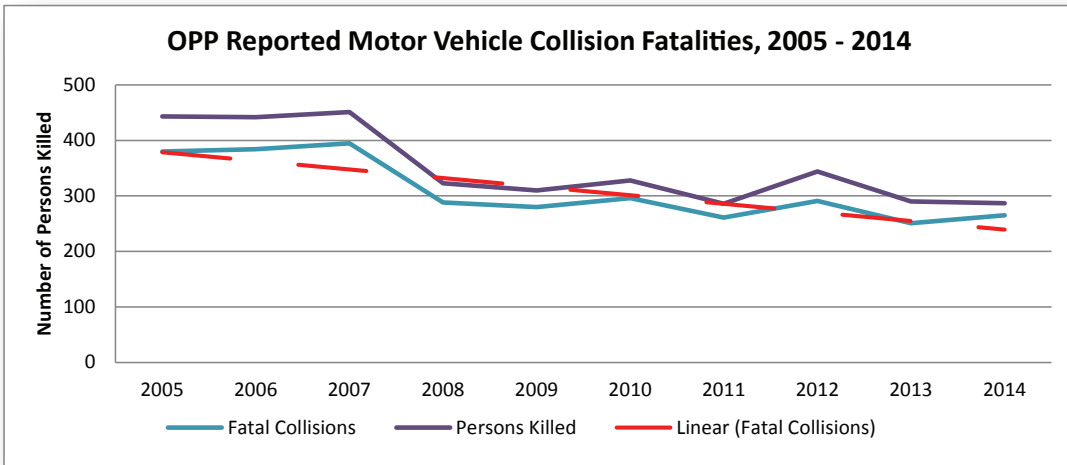




Motor Vehicle Collisions										
	2005	2006	2007	2008	2009	2010	2011	2012	2013	2014
Number of Fatal Collisions	380	384	395	288	280	296	261	291	251	265
Persons Killed	443	442	451	323	310	328	286	344	290	287
Persons Killed - Alcohol/drug-related	63	65	93	58	50	80	71	80	73	46
Persons Killed - Inattentive-related					71	82	83	86	88	73
Persons Killed - Speed-related	159	146	158	111	80	78	75	89	47	61
Persons Killed - No seatbelt/helmet	120	101	116	77	67	94	77	83	71	50
Persons Killed - Pedestrian	30	34	36	16	30	21	28	26	24	25





Motor Vehicle Collisions	2009	2010	2011	2012	2013	2014
January	9,347	6,767	8,437	7,565	7,468	10,605
February	5,293	5,770	6,434	5,258	6,388	6,834
March	4,170	3,829	5,973	4,461	4,838	6,042
April	4,757	4,098	4,227	4,113	4,535	4,348
May	4,882	5,344	4,920	5,103	5,077	4,792
June	5,409	5,367	5,711	5,729	5,750	5,698
July	5,378	5,878	5,715	5,481	5,902	5,555
August	5,549	5,630	5,317	5,680	5,725	5,456
September	4,942	5,196	5,118	5,186	5,314	5,126
October	5,623	6,096	6,041	5,943	6,301	5,866
November	6,262	6,975	7,057	7,198	8,105	8,184
December	7,596	8,154	7,626	7,239	9,837	6,178
	69,208	69,104	72,576	68,956	75,240	74,684



Motor Vehicle Collisions Involving Large Commercial Transport Trucks	2005	2006	2007	2008	2009	2010	2011	2012	2013	2014
Number of Collisions					4,667	5,058	5,293	5,138	5,598	6,140
Number of Fatal Collisions	55	77	92	56	51	58	51	48	46	61
Persons Killed	66	90	101	65	58	63	58	68	58	69
Number of TT Drivers Killed	5	10	18	9	7	13	7	9	10	4
Motor Vehicle Collisions Involving Motorcycles	2005	2006	2007	2008	2009	2010	2011	2012	2013	2014
Number of Collisions					769	799	818	845	817	803
Number of Fatal Collisions	41	26	29	26	17	28	21	27	28	31
Persons Killed	43	26	29	28	17	28	21	27	28	32
Motor Vehicle Collisions - Animal Related	2005	2006	2007	2008	2009	2010	2011	2012	2013	2014
Number of Collisions					11,451	11,827	11,732	11,868	12,100	11,466
Number of Fatal Collisions	0	0	0	2	1	3	3	6	6	2
Persons Killed	0	0	0	2	1	4	3	6	6	2
Percentage Animal Related Collisions of Total Collisions					16.5%	17.1%	16.2%	17.2%	16.1%	15.4%



ALL REGIONS	TOTAL		CENTRAL		NORTH WEST		EAST		NORTH EAST		HSD-GTA		WEST	
	2013	2014	2013	2014	2013	2014	2013	2014	2013	2014	2013	2014	2013	2014
Fatal Motor Vehicle Collisions	2013	2014	2013	2014	2013	2014	2013	2014	2013	2014	2013	2014	2013	2014
Number of Fatal Collisions	251	265	51	51	19	15	46	45	33	33	32	40	70	81
Persons Killed	290	287	58	56	29	19	52	48	37	35	36	41	78	88
Persons Killed - Alcohol/drug-related	73	46	13	6	7	2	13	8	10	11	11	6	19	13
Persons Killed - Inattentive-related	88	73	19	13	6	7	12	9	13	10	8	4	30	30
Persons Killed - Speed-related	47	61	11	16	4	3	7	6	6	5	5	12	14	19
Persons Killed - No seatbelt/helmet	71	50	12	10	8	3	13	5	9	6	3	9	26	17
Motor Vehicle Collisions	2013	2014	2013	2014	2013	2014	2013	2014	2013	2014	2013	2014	2013	2014
January	7,468	10,605	1,412	1,881	436	418	1,269	1,942	695	714	2,169	3,567	1,487	2,083
February	6,388	6,834	995	1,174	239	285	1,139	1,027	478	367	2,119	2,236	1,418	1,745
March	4,838	6,042	805	1,060	217	225	879	1,022	360	366	1,412	1,980	1,165	1,389
April	4,535	4,348	718	753	268	179	795	763	374	314	1,377	1,355	1,003	984
May	5,077	4,792	873	753	221	195	876	827	390	376	1,606	1,608	1,111	1,033
June	5,750	5,698	904	911	294	300	1,020	1,006	508	516	1,831	1,769	1,193	1,196
July	5,902	5,555	1,043	903	273	279	1,043	982	471	439	1,931	1,840	1,141	1,112
August	5,725	5,456	1,014	908	270	222	948	927	448	391	1,930	1,961	1,115	1,047
September	5,314	5,126	877	823	220	212	839	790	404	362	1,941	1,963	1,033	976
October	6,301	5,866	1,092	837	256	235	1,032	978	450	470	2,087	1,894	1,384	1,452
November	8,105	8,184	1,299	1,255	424	341	1,477	1,266	664	759	2,230	2,335	2,011	2,228
December	9,837	6,178	1,686	887	509	297	1,863	1,131	742	559	3,228	1,944	1,809	1,360
	75,240	74,684	12,718	12,145	3,627	3,188	13,180	12,661	5,984	5,633	23,861	24,452	15,870	16,605



ALL REGIONS	TOTAL		CENTRAL		NORTH WEST		EAST		NORTH EAST		HSD-GTA		WEST	
	2013	2014	2013	2014	2013	2014	2013	2014	2013	2014	2013	2014	2013	2014
Motor Vehicle Collisions Involving Large Commercial Transport Trucks														
Number of Collisions	5,598	6,140	408	522	482	452	719	699	623	684	2,508	2,748	858	1,035
Number of Fatal Collisions	46	61	5	7	8	5	9	9	4	13	10	13	10	14
Persons Killed	58	69	6	7	14	7	11	11	5	14	11	13	11	17
Number of TT Drivers Killed	10	4	1	0	2	2	0	0	2	1	2	1	3	0
Motor Vehicle Collisions Involving	2013	2014	2013	2014	2013	2014	2013	2014	2013	2014	2013	2014	2013	2014
Number of Collisions	817	803	204	169	30	21	187	180	44	53	160	184	192	196
Number of Fatal Collisions	28	31	6	6	1	2	5	5	1	3	7	6	8	9
Persons Killed	28	32	6	6	1	2	5	5	1	4	7	6	8	9
Motor Vehicle Collisions - Animal	2013	2014	2013	2014	2013	2014	2013	2014	2013	2014	2013	2014	2013	2014
Number of Collisions	12,100	11,466	2,206	2,056	1,033	888	2,730	2,554	1,631	1,529	529	494	3,971	3,945
Number of Fatal Collisions	6	2	2	0	1	1	2	0	1	0	0	0	0	1
Persons Killed	6	2	2	0	1	1	2	0	1	0	0	0	0	1
Percentage Animal Related Collisions	16.1%	15.4%	17.3%	16.9%	28.5%	27.9%	20.7%	20.2%	27.3%	27.1%	2.2%	2.0%	25.0%	23.8%