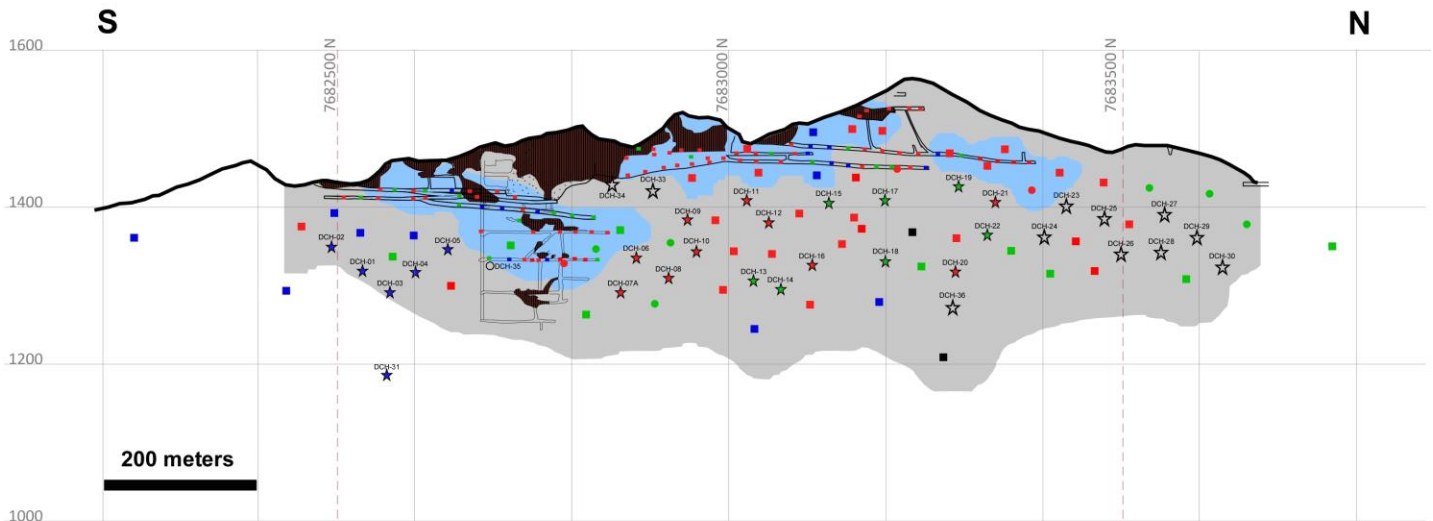


Figure 3: Lolon Vein Long-Section



**CHALLACOLLO PROJECT
LONGITUDINAL SECTION LOOKING WEST**



LEGEND

- | | | | | |
|---|--|--|--|--|
| <p>ASSAY COLOR LEGEND</p> <ul style="list-style-type: none"> ■ > 150 g/t AgEq ■ 70 - 150 g/t AgEq ■ < 70 g/t AgEq ■ missed Lolon vein <p><small>NOTE: Grades are diluted to 4 m minimum mining width (64 g/t Ag = 1 g/t Au)</small></p> | <p>MINE WORKINGS</p> <ul style="list-style-type: none"> — Developed ■ Stopped | <p>2014 RESOURCES</p> <ul style="list-style-type: none"> ■ Measured ■ Indicated ■ Inferred | <p>Mandalay Core Hole ID</p> <ul style="list-style-type: none"> ★ Completed - assays pending <p><small>NOTE: Holes and workings projected to section</small></p> | <ul style="list-style-type: none"> □ Pre-Mandalay RC hole results previously reported ○ Pre-Mandalay core hole results previously reported |
|---|--|--|--|--|